

# ALC工廠化單元屋

ALC Modular House

ALC板工廠化單元屋將新型節能建材、裝飾裝修材料、高抗震鋼結構體系，以及設計、土建、裝修、施工和技術服務的全部工作進行了產業化整合，工廠化單元屋的研發和製造，將傳統建材製造和現場砌築的建造方式提升為房屋商品製造和現場拼裝，完全改變了傳統的建築理念，對推進建築產業化、建材產品技術創新起著重要作用。

ALC House is manufactured through industrialized integration of energy-saving construction materials, decoration materials, highly aseismic steel-frame system as well as works of design, construction, decoration, installation and technical services, and targets as both domestic and overseas markets. The assembling techniques as well as the energy-saving and aseismic performance of such modular house are both among high level of this industry globally. The manufacturing and development of ALC House upgrades traditional building material production and on-site construction to housing product manufacturing and on-site assembling, totally changed traditional building concept, and plays an important role in promoting building industrialization and technological innovation of building products.

## 適用範圍

Scope of Application

ALC工廠化單元屋具有良好的抗震性和居住舒適性，是七層以下多層建築的理想選擇，適用於別墅、多層公寓、養老院、學校、酒店、醫院、商業用房等民用或公共建築。

ALC House shows good performance in aseismic feature and comfortability. It is ideal for constructions under seven storeys high, and suitable for residential and public constructions, such as villa, apartment, beadhouse, school, hotel, hospital, commercial housing, etc.

# 工廠化單元屋-物性說明

## Performance Properties

安全性能 Safety Performance	抗風壓性能 Wind resistance	可承受風速 63m/秒 Able to stand wind speed of 63 m/s
	防火性 Fire resistance	$\geq 4$ 小時 $\geq 4$ hours
	抗震性 Aseismic Performance	可滿足抗震設防烈度 10 度以上要求，為地震多發地區提供理想的高品質抗震住宅。 Designed to meet the requirement of seismic fortification intensity higher than 10 degree, and to be perfect for high-quality aseismic housing in earthquake-prone areas.
舒適性能 Comfortability	隔熱性 Thermal insulation	可以滿足節能 65% 指標， $k=0.52\text{W/m}^2\text{K}$ ，為 RC 牆的 1/10。 Designed to fully meet 65% energy-saving index, namely $K=0.52\text{W/m}^2\text{K}$
	隔音性 Sound insulation	空氣隔音量 $\geq 45\text{db}$ 撞擊聲隔音量 $\leq 50\text{db}$ Air acoustic insulation mass $\geq 45\text{db}$ Shock acoustic insulation mass $\leq 50\text{db}$
環保性能 Environmental friendly performance	耐久性 Durability	$\geq 100$ 年 $\geq 100$ years

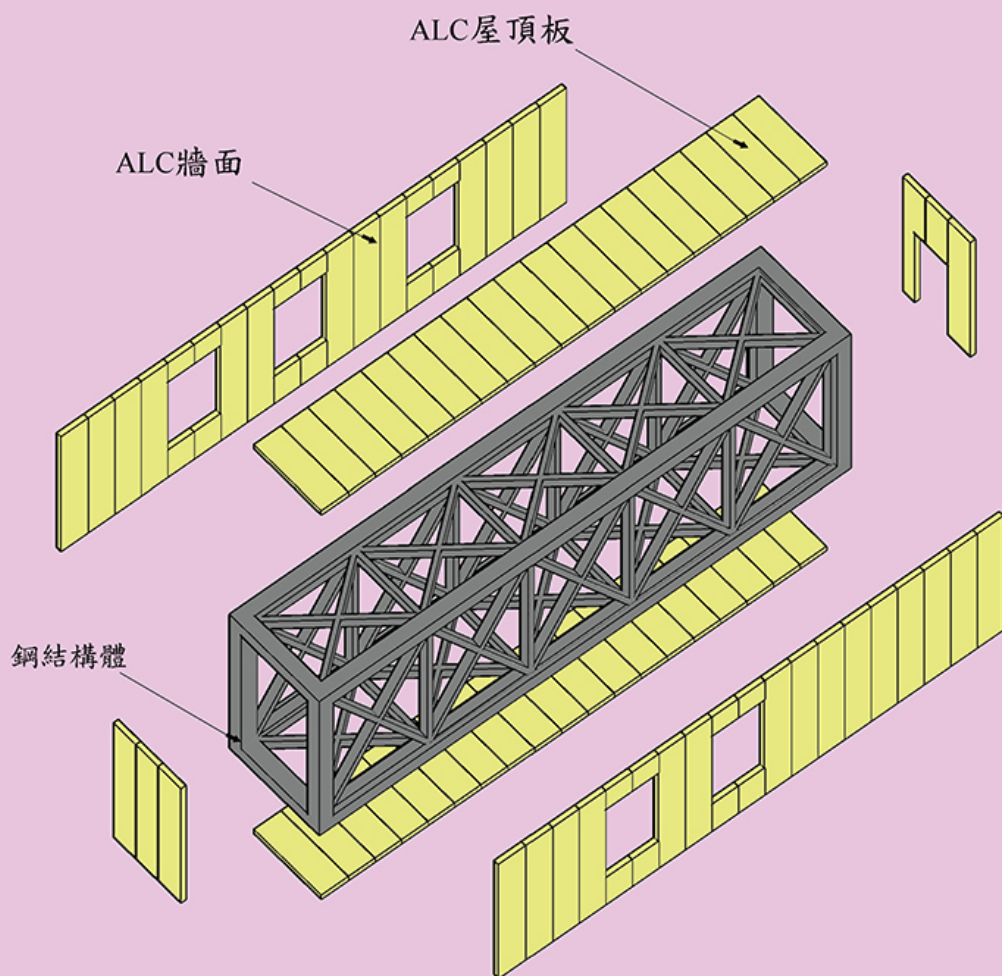


# 建築設計概念

Construction Design Concept

工廠化單元屋是將整個建築物分割成一定尺寸大小的單元，採用具有質輕、抗震、耐火、隔音、隔熱、保溫等優越性能的ALC板作為維護體系與鋼結構匹配，通過專用設備組裝成單元屋，可根據客戶需要進行簡單或精緻裝修，在工廠完成 80% 的建案工作，運往現場，組裝成完整的建築物。

工廠化單元屋，首先由工廠完成鋼結構製作以及外牆、內牆、樓地板、屋頂板的組設和安裝。藉由工廠模組化製造成基本單元架構「基本單元架構」後，再運往工地現場拼裝組固，大幅度縮短傳統現場施作的工期。而平均八小時即可以完成 1 個「基本單元」的生產製造。



劉聚建材有限公司

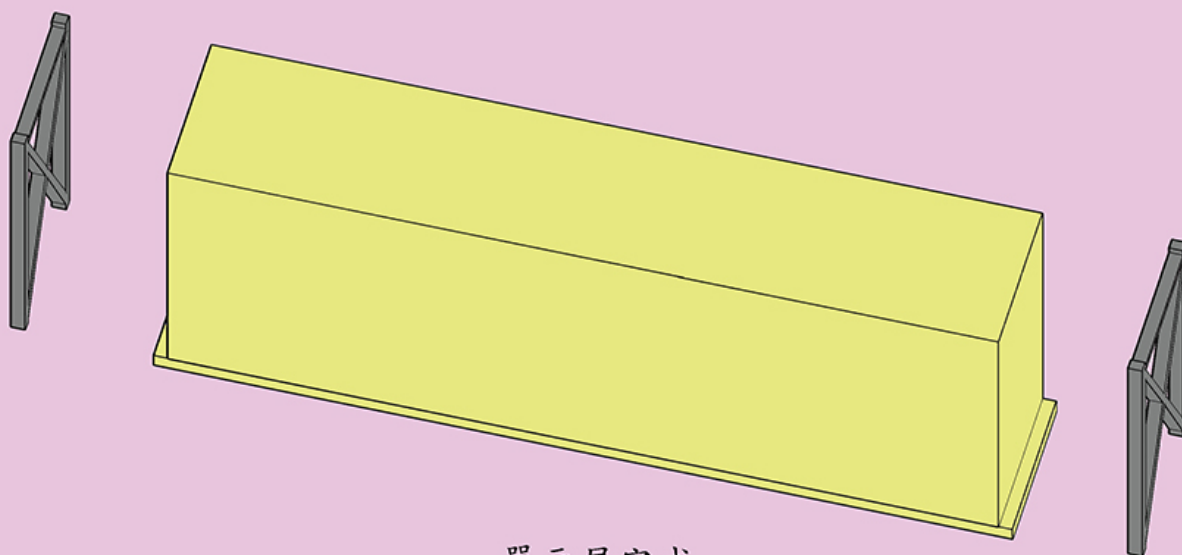
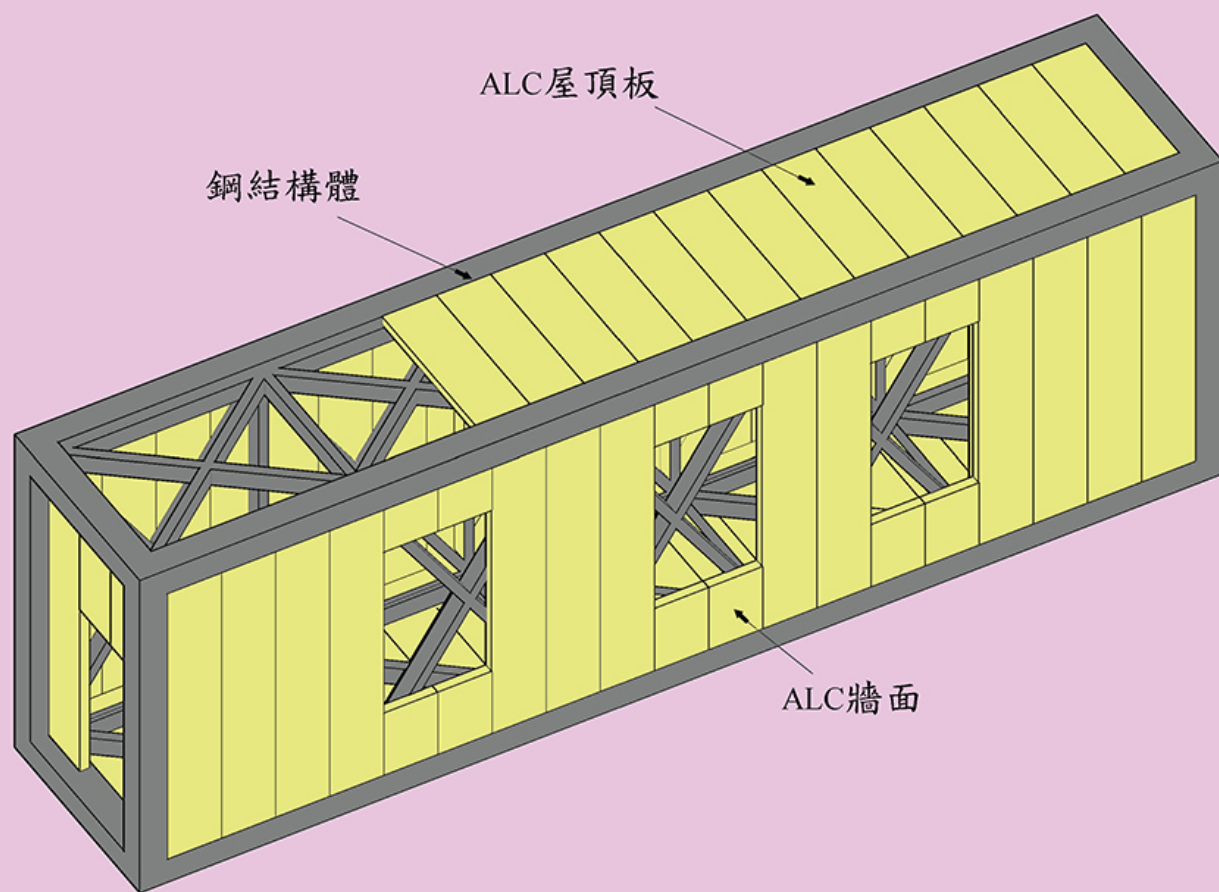
台中市大里區大里路35-2號

TEL : (04)2483-7822 FAX:(04)2483-7626

圖名  
DWG TITLE

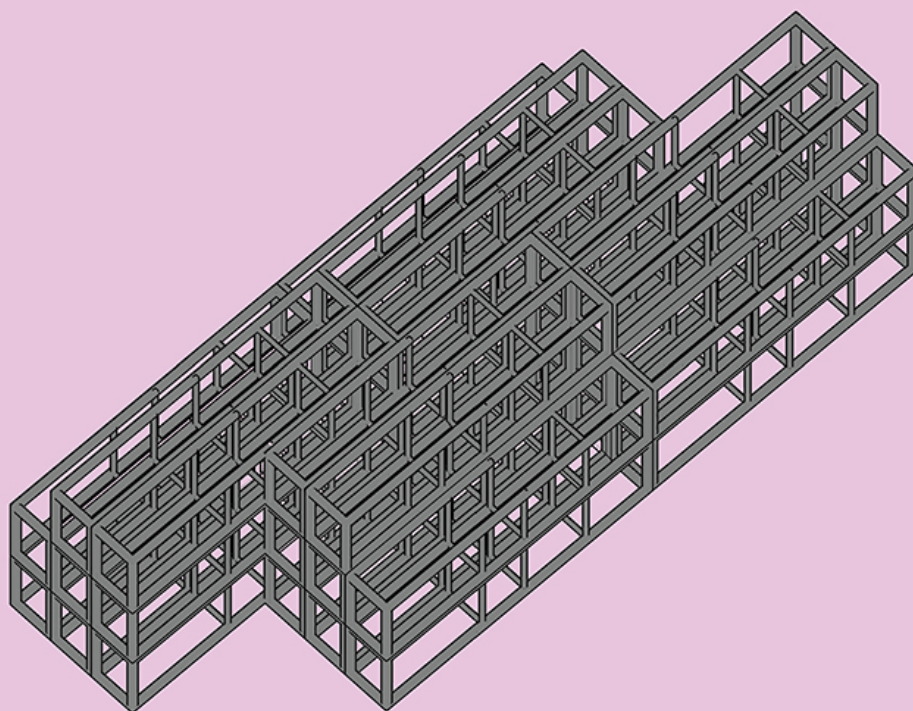
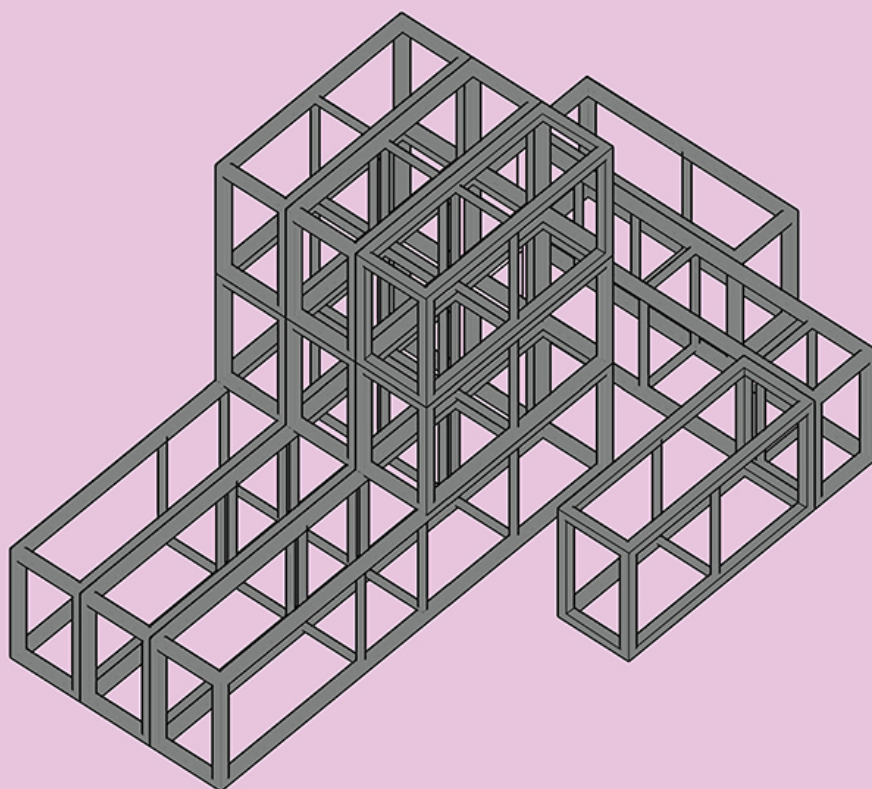
基本單元架構(1)

圖號  
SHEET NO.



單元屋完成





剴聚建材有限公司

台中市大里區大里路35-2號

TEL : (04)2483-7822 FAX:(04)2483-7626

圖名  
DWG TITLE

單元排列組裝架構

圖號  
SHEET NO.





輕鋼構屋—ALC工廠化單元屋





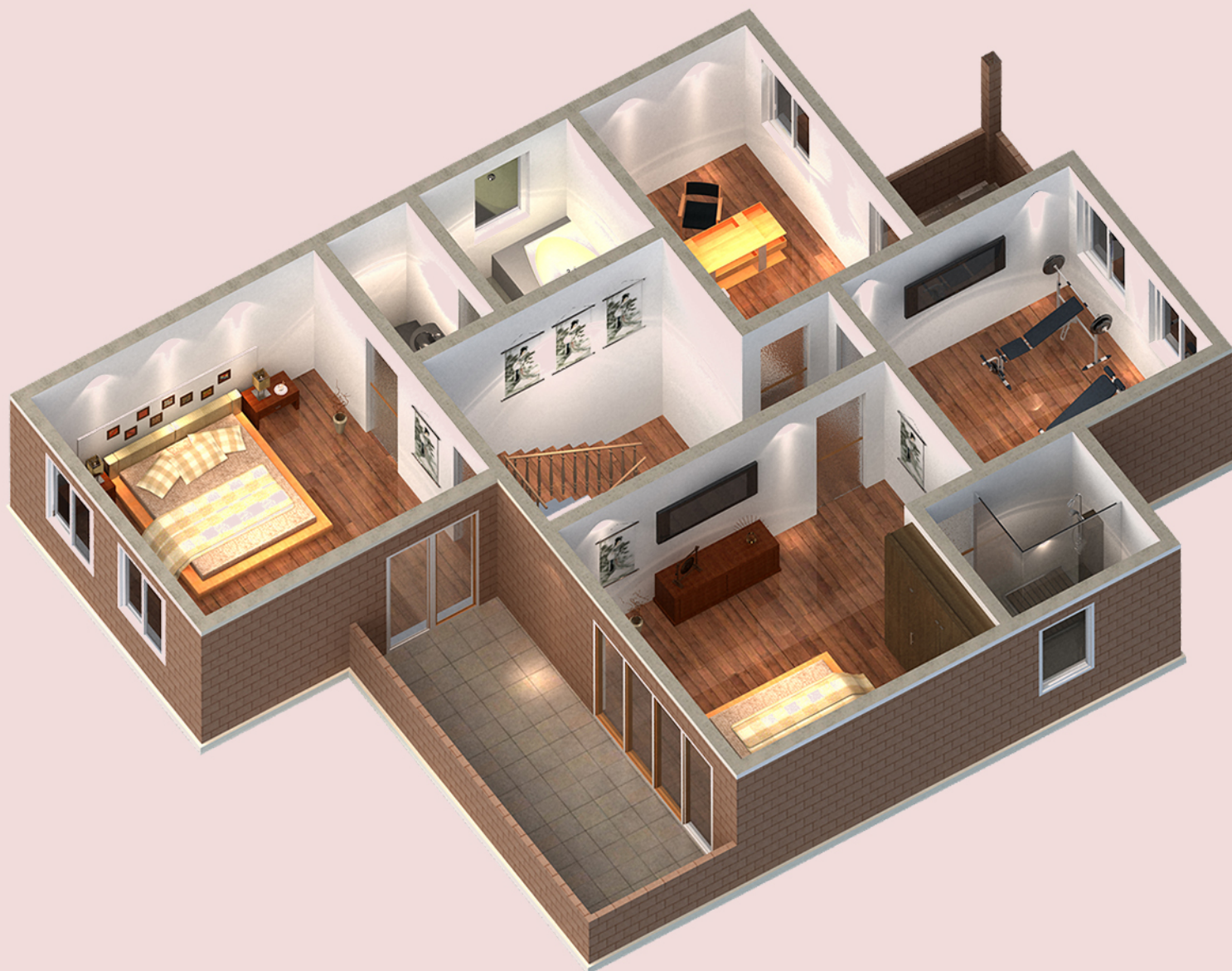
輕鋼構屋—ALC工廠化單元屋





內部裝修施作－KG06－A6



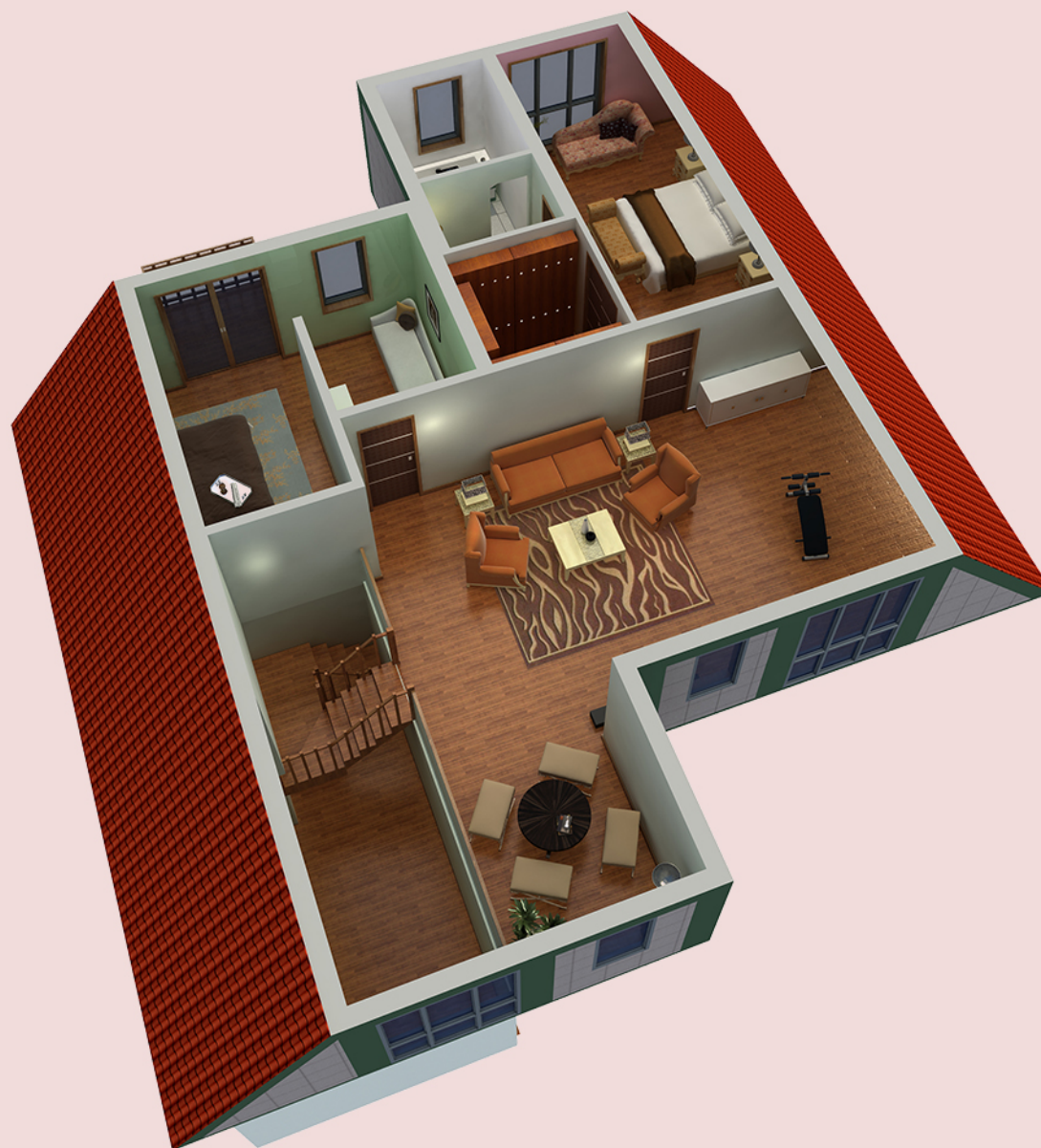


內部裝修施作－KG06－A8



內部裝修施作－KG06－A9





内部裝修施作－KG08－F5



内部裝修施作－KG08－F2





内部裝修施作－KG08－F3



内部裝修施作－KG08－F4





内部裝修施作—KG08—F1





























